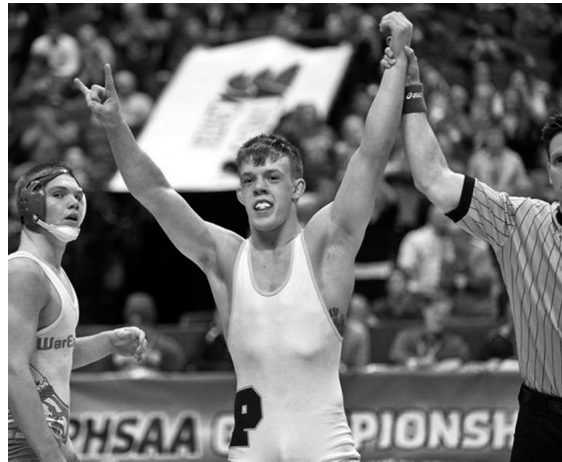


The sports and extracurricular activity program is extensive and is noted in central New York for its success. A full complement of interscholastic teams, intramural activities, and co-curricular clubs are available. Numerous athletic teams qualify for state scholar-athlete awards annually.

The music and art programs in the school system are very successful and provide excellent opportunities for all students K-12. Performing arts opportunities are offered in band, chorus, orchestra and drama.

The district has recently renovated all four of its campuses. State-of-the-art science lab facilities, an interactive distance learning classroom and extensive technology infusion have highlighted these improvements. The district enjoys one computer per every three students. State-of-the-art computer labs exist in each building. Computer clusters are found in classrooms K-5, as well as smart technology.



A Commitment to Excellence

The District is marked by a tradition of excellence in academic accomplishments and student achievement.

- Extensive curricular offerings
- Honors/advanced placement courses
- Full program of extracurricular and interscholastic athletics
- Outstanding music and art programs
- Approximately 90% of the graduating seniors go to college
- An energetic and expansive Teacher and Learning Center is located in the district to support professional growth for faculty members
- Active and interested Parent Teacher Associations



Welcome to the Holland Patent Central School District



Holland Patent, New York

The Area

The greater Holland Patent area is located in central New York, 12 miles north of Utica and 12 miles east of Rome, between the Mohawk Valley and the foothills of the Adirondack mountains. The area is rich in history and tradition.

The village was established when Lord Holland was granted a Royal Patent for the community in 1796. Ten small, neighboring communities (Barneveld, Prospect, Hinckley, Floyd, Camroden, Stittville, North Western, Steuben, South Trenton and Trenton Falls) joined to form the present school district.

The Mohawk Valley is rich in history, with major contributions by the Indians, French, British and American Colonists. It is an excellent location for professional and personal growth, being served by Hamilton College, Utica College, SUNY Poly, Colgate University, Mohawk Valley Community College, Herkimer College and Syracuse University. The Munson-Williams-Proctor Institute, the Utica Symphony, the Broadway Theater League, the Great Artists Series, the Utica Zoo and the Children's Museum typify the organizations, which add to cultural life. Abundant recreational facilities - for golf, skiing, swimming, camping, hiking, hunting and fishing - complement the desirable lifestyle offered by the rural-suburban nature of the Holland Patent Central School District.



School District Philosophy



"It is the philosophy of the Board of Education of the Holland Patent Central School District that the fundamental purpose of the School District and all of its resources is to provide the means for educational development of all eligible students residing and/or enrolled within the district to their fullest potential. District schools will act as dedicated, professional partners with the home and community in the development of each student in mind, body and social consciousness." The establishment and maintenance of school district programs and policies will be based on this philosophical premise.

Qualifications

The educational program of the Holland Patent Central School District is rich in opportunities for everyone to succeed.

The district is comprised of 116 teachers and 106 support staff. The administrative and supervisory staff consists of the superintendent of schools, high school principal, high school assistant/athletic director, middle school principal, two elementary school principals, pupil personnel/CSE chairperson, assistant superintendent of curriculum and instruction, and an assistant superintendent of business and finance. The district is organized as one K-2 building, a 3-5 building, a 6-8 middle school and a 9-12 high school. Approximately 1,500 pupils attend school at Holland Patent.

The district provides a comprehensive guidance program, including a coordinator of guidance, two guidance counselors and a social worker, who serve the district in grades K-12.

Learning opportunities exist for advanced students with options including Advanced Placement courses and enrichment courses via a distance learning network.

Holland Patent has a comprehensive special education and academic intervention service program. Academic support is provided during school hours, after school, Saturdays and through a variety of summer programs.

Among graduating seniors, 90%+ go on to post-secondary education.